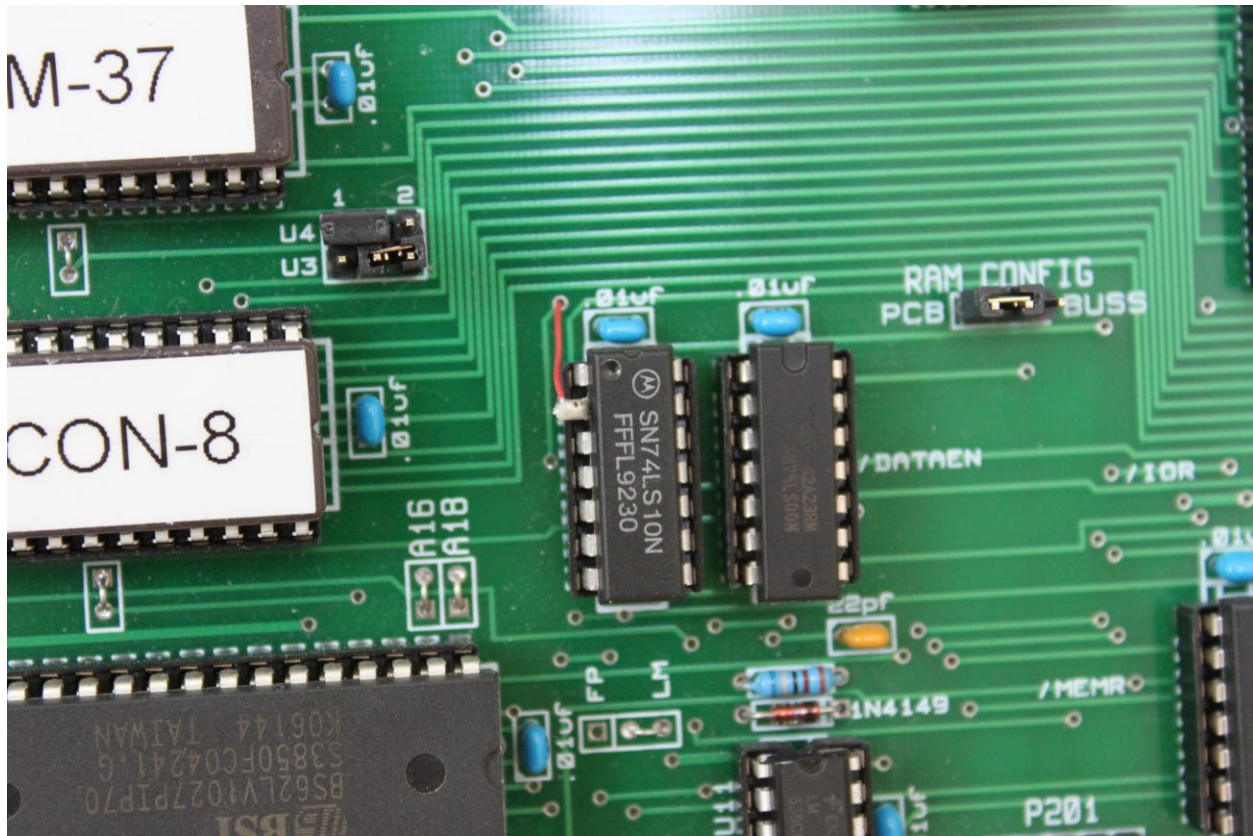


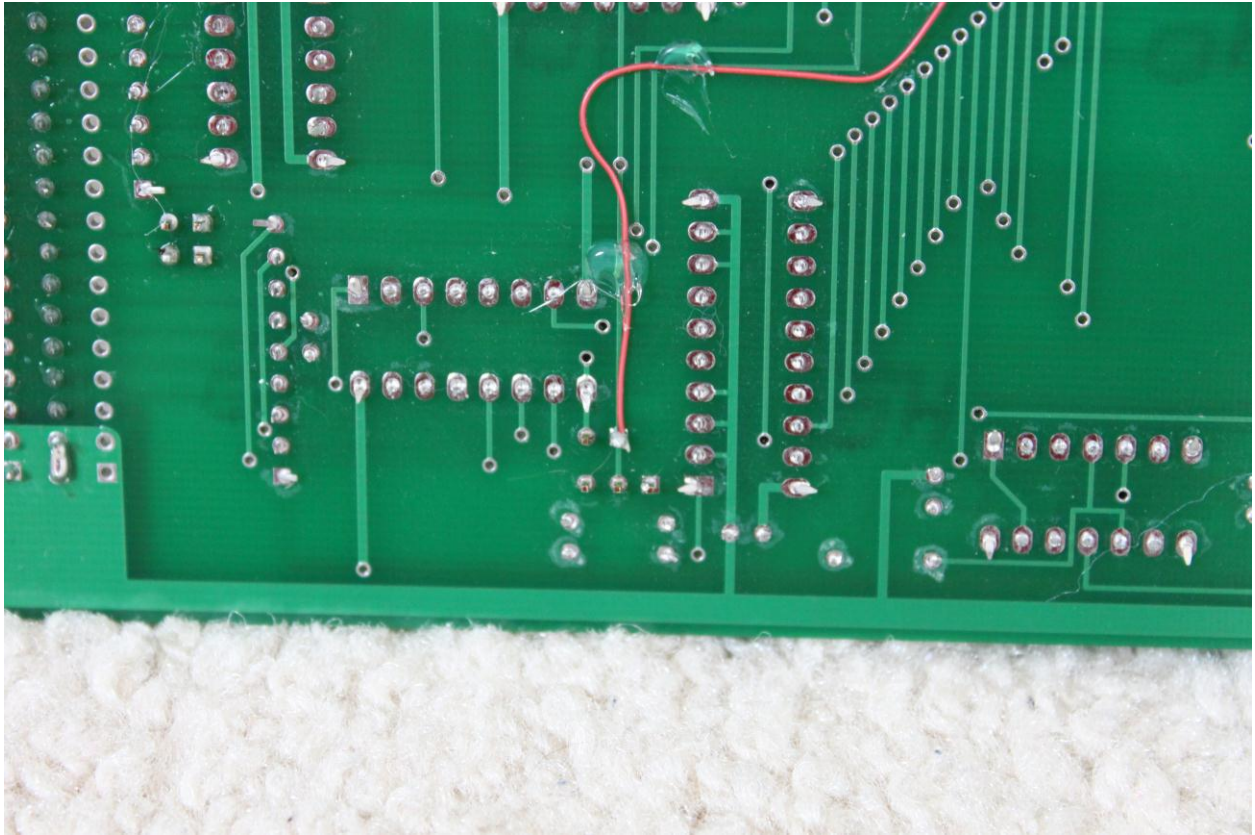
In order to support the Heathkit WH-8-37 or the “new” H8-Z37, the following changes must be performed on the H8-Z80-64 board.

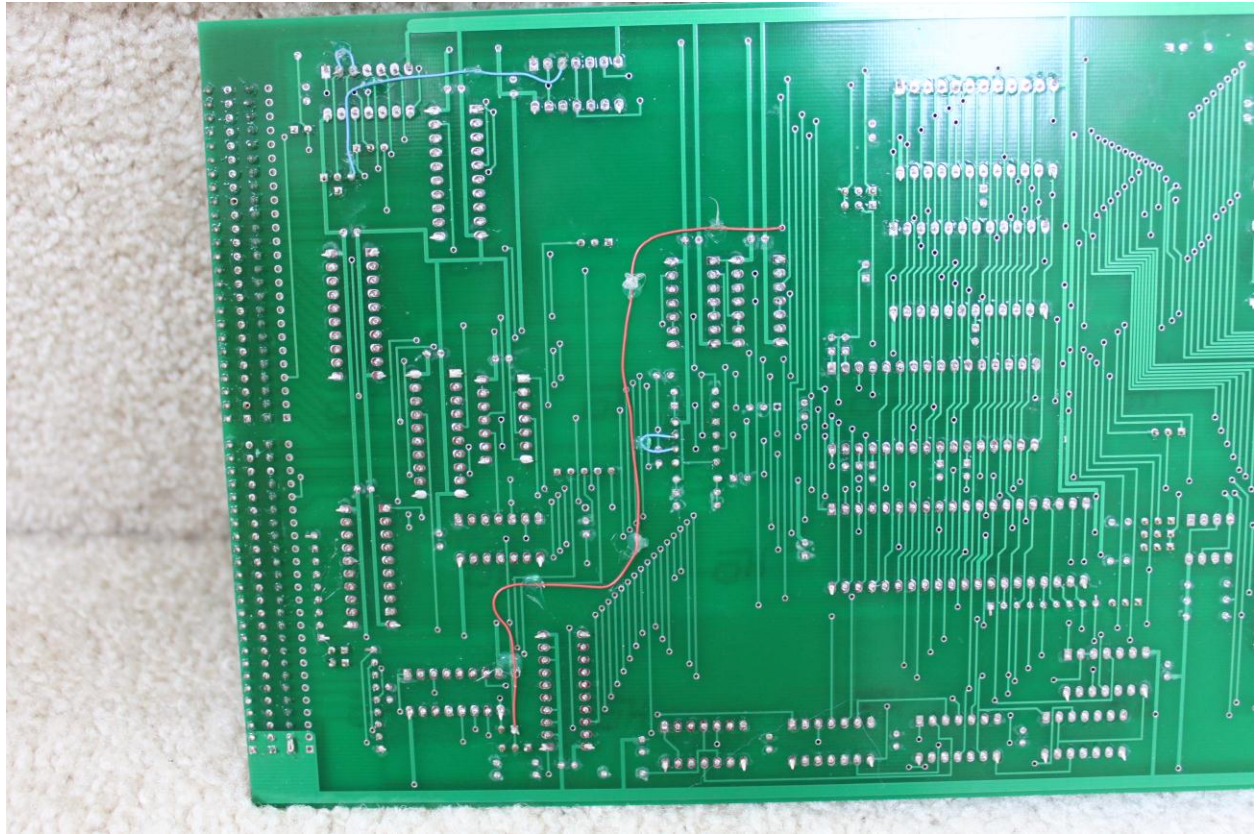
**Note:** This rework is “**only**” required when using the WH-8-37 or the “new” H8-Z37 board.



1. Removed U8 (74LS10) and bend out pin2. Reinsert U8 and solder a wire to pin 2 as shown above.

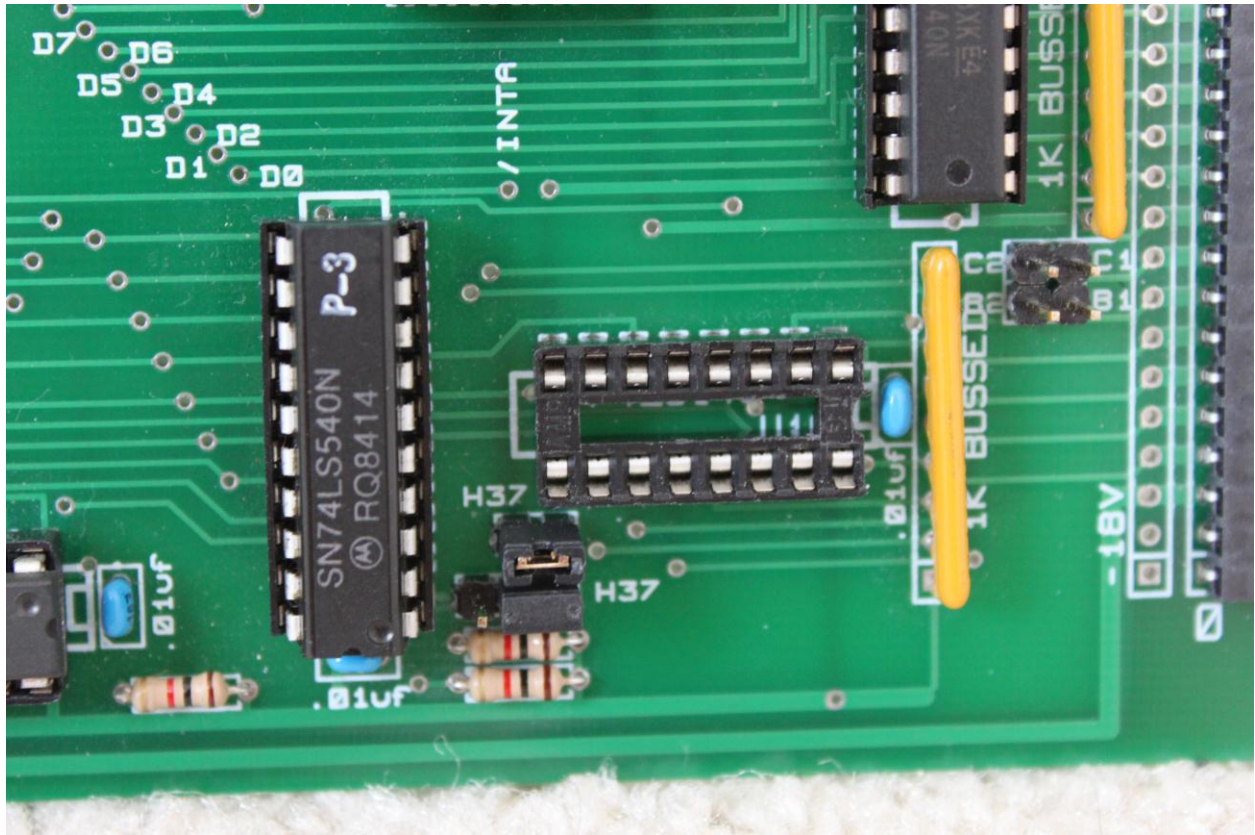
2. Solder the other end of the wire to pin 1 on the H37 jumper as shown below.



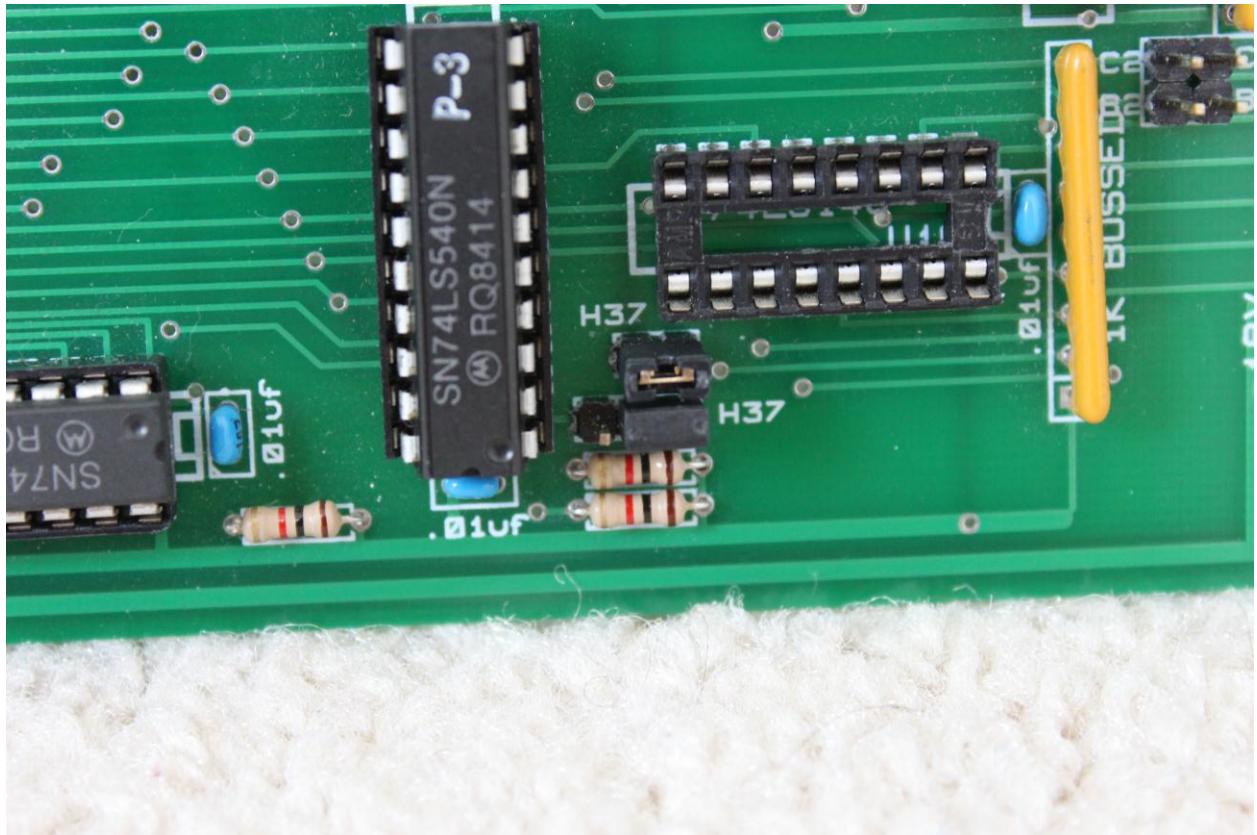




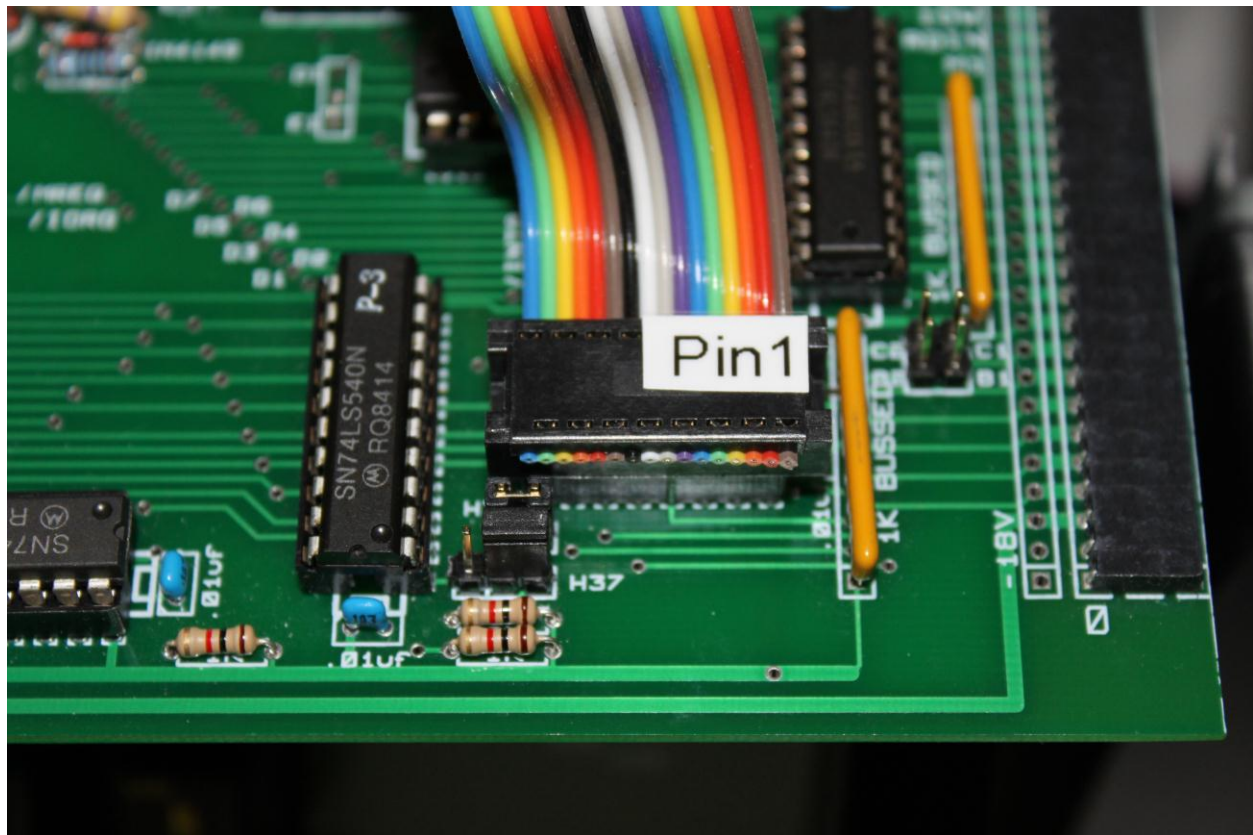
3. Removed U16 (74LS148) as shown below.



4. Reconfigured Z37 jumpers as shown below.

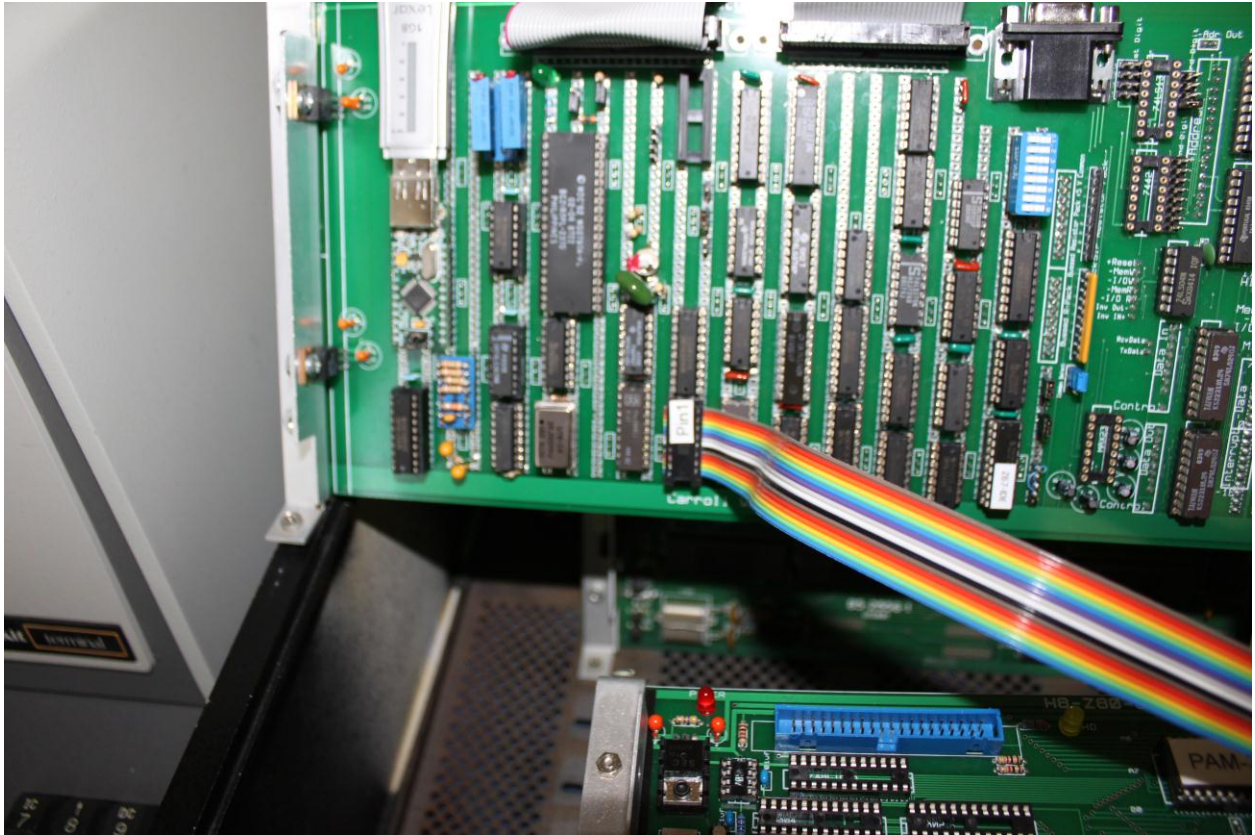


5. Insert 16 pin header cable as shown below. Label pin 1 at both ends of the cable for proper installation.





6. Connect the other end of the 16 pin cable to the WH-8-37 or the new H8-Z37. Make sure pin 1 is correctly placed.



7. Power-on the H8 system. The LED's and front panel should be operational.

