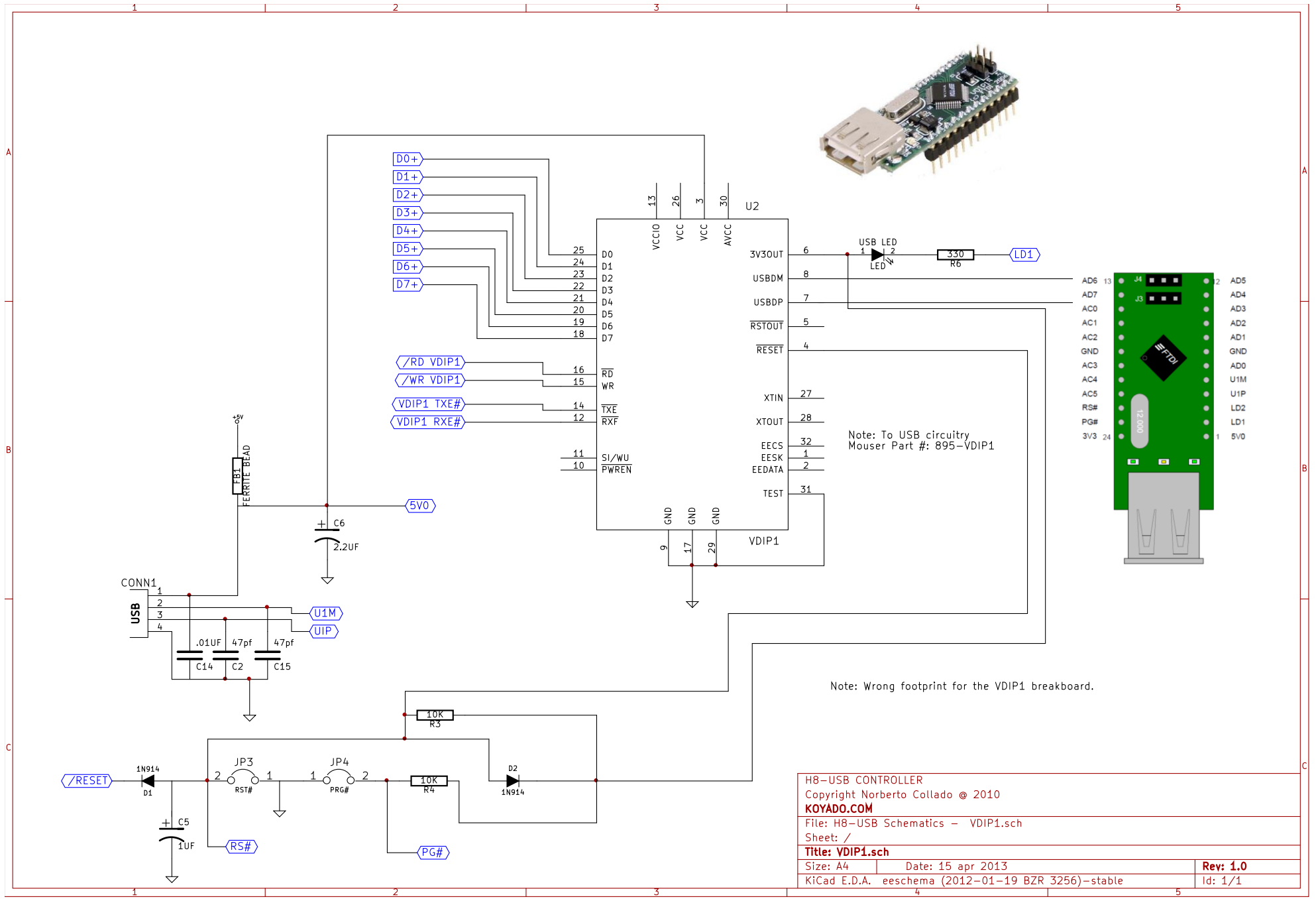
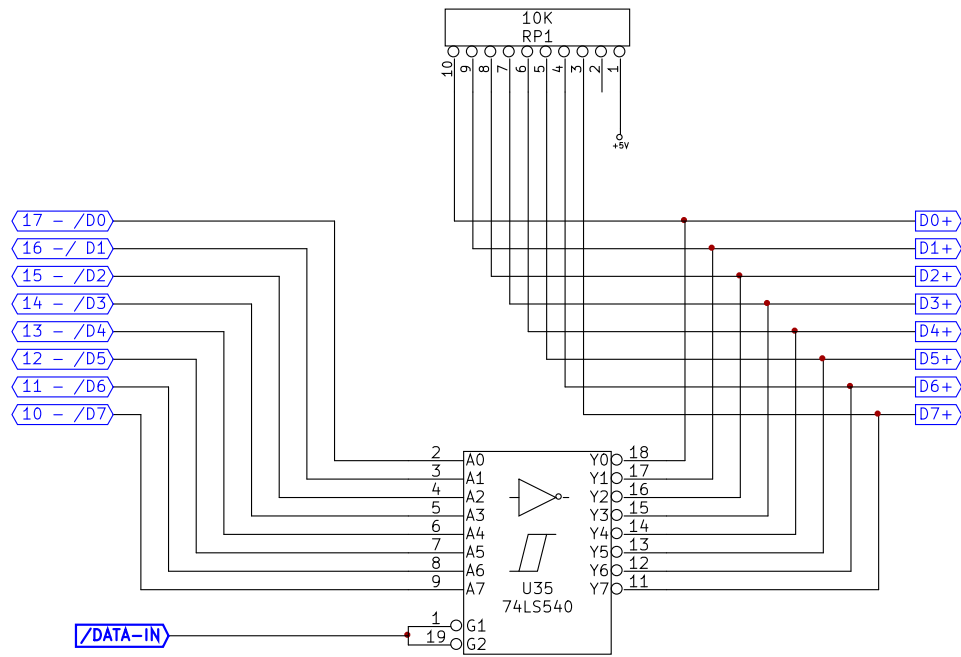


H8-USB CONTROLLER		
Copyright Norberto Collado © 2010		
KOYADO.COM		
File: H8-USB Schematics - READ STATUS.sch		
Sheet: /		
Title: READ SWITCH.sch		
Size: A4	Date: 14 apr 2013	Rev: 1.0
KiCad E.D.A.	eeschema (2012-01-19 BZR 3256)-stable	Id: 1/1

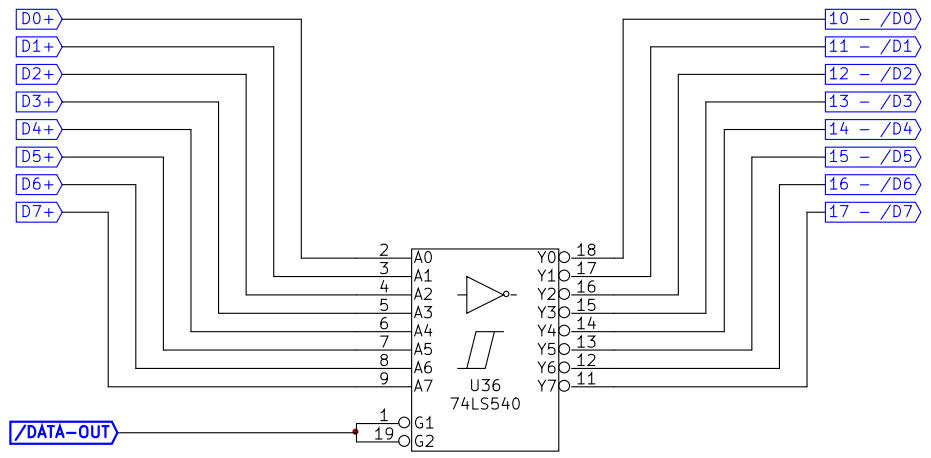


H8-USB CONTROLLER		
Copyright Norberto Collado © 2010		
KOYADO.COM		
File: H8-USB Schematics - VDIP1.sch		
Sheet: /		
Title: VDIP1.sch		
Size: A4	Date: 15 apr 2013	Rev: 1.0
KiCad E.D.A. eeschema (2012-01-19 BZR 3256)-stable		Id: 1/1

HEATHKIT H8 BUS

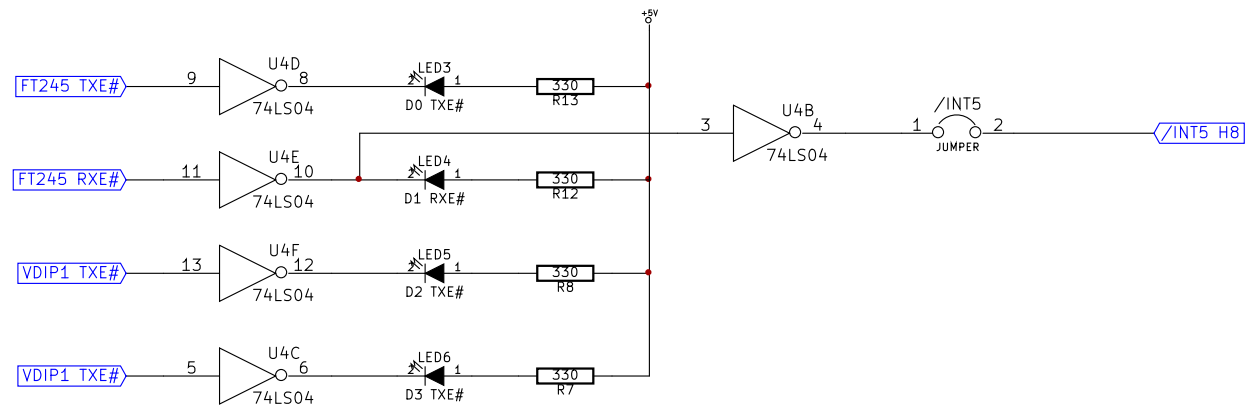


H8-USB CONTROLLER		
Copyright Norberto Collado © 2010		
KOYADO.COM		
File: H8-USB Schematics - DATAIN.sch		
Sheet: /		
Title: DATA-IN BUFFER.sch		
Size: A4	Date: 1 jan 2013	Rev: 1.0
KiCad E.D.A. eeschema (2012-01-19 BZR 3256)-stable		Id: 1/1



HEATHKIT H8 BUS

H8-USB CONTROLLER		
Copyright Norberto Collado © 2010		
KOYADO.COM		
File: H8-USB Schematics - DATA-OUT.sch		
Sheet: /		
Title: DATA-OUT BUFFER.sch		
Size: A4	Date: 6 jan 2011	Rev: 1.0
KiCad E.D.A. eeschema (2012-01-19 BZR 3256)-stable		Id: 1/1

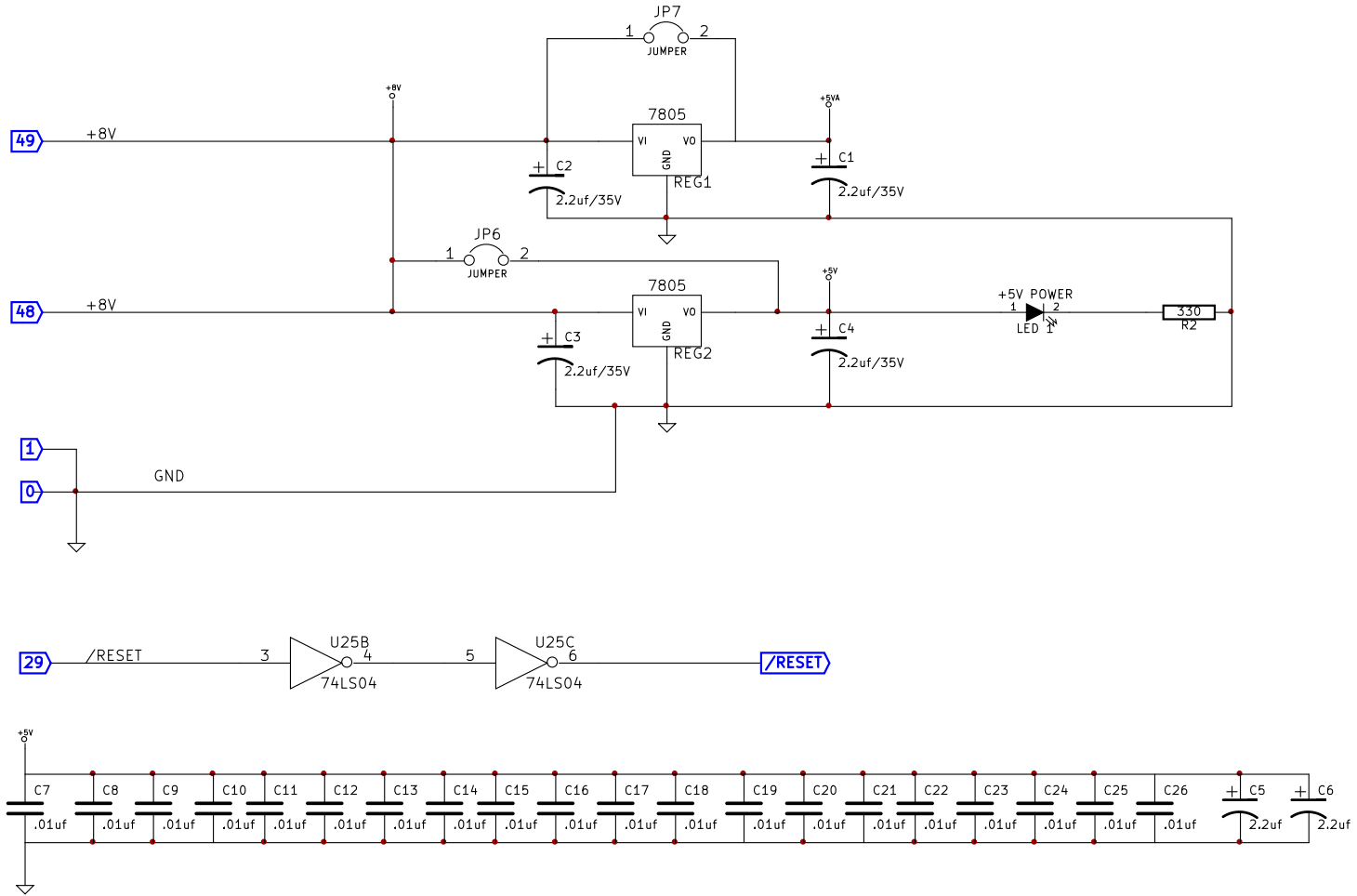


Note: LED "ON" means device is not ready to TX or RX.

H8-USB CONTROLLER		
Copyright Norberto Collado © 2010		
KOYADO.COM		
File: H8-USB Schematics - I_0.sch		
Sheet: /		
Title: I/O.sch		
Size: A4	Date: 14 apr 2013	Rev: 1.0
KiCad E.D.A.	eeschema (2012-01-19 BZR 3256)-stable	Id: 1/1

HEATHKIT H8 BUS

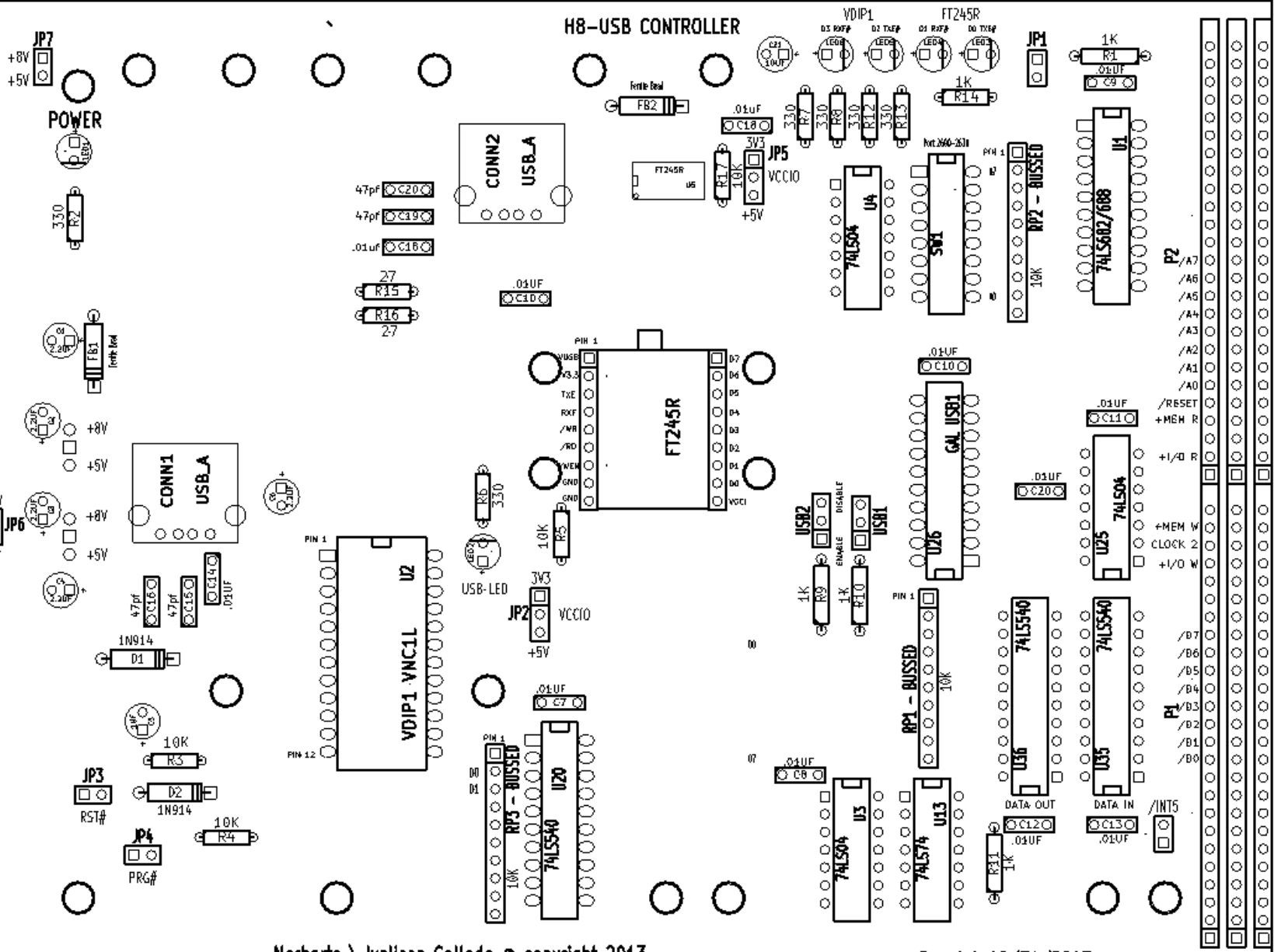
Warning: Use JP6 and JP7 jumpers when USB board inserted into a +5V PSU.
Otherwise the board will be damaged.



H8-USB		
Copyright Norberto Collado © 2010		
KOYADO.COM		
File: H8-USB Schematics - POWER.sch		
Sheet: /		
Title: POWER /RESET.sch		
Size: A4	Date: 30 mar 2013	Rev: 1.0
KiCad E.D.A. eeschema (2012-01-19 BZR 3256)-stable		Id: 1/1

H8-USB Controller

H8-USB CONTROLLER



H8-USB Controller

mailto:fp@fayado.com

+8V
+5V

POWER

+8V
+5V
+8V
+5V

Copyright © 2013, Fayado

H8-USB CONTROLLER

H8-USB

VDIP1

FT245R

3V3
YCCIO
+5V

USB LED

3V3
YCCIO
+5V

Norberto \ Ivélisse Collado © copyright 2013

Rev 1.1 10/31/2013

- /A7
- /A6
- /A5
- /A4
- /A3
- /A2
- /A1
- /A0
- /RESET
- +MEM R
- +I/O R
- +MEM W
- CLOCK 2
- +L/D W
- /D7
- /D6
- /D5
- /D4
- /D3
- /D2
- /D1
- /D0
- /INT5